

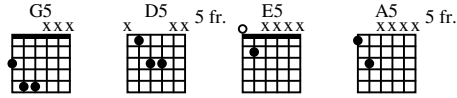
OVER THE HILLS AND FAR AWAY

As recorded by Led Zeppelin

(From the 1973 Album HOUSES OF THE HOLY)

Transcribed by Andy Aledort
(transferred to powertab by)
cbliss66@aol.com

Words and
Arranged



A Intro

Moderate Rock ♩ = 96

G D

Acous.

Gtr I
let ring

H P P H P P P

D C Cadd9 G/B B^b6

H P P

7

T
A
B

8

T
A
B

sl.

C 2nd and 4th Verse



9

G5 D D5 A G5 A5 G5 D D5 A

T
A
B

(3) (9)

12

G5 A5 G A/D G/D A/D G/D

T
A
B

p

To Coda

A/D G/D A/D G/D G5 D D5 A

15

T
A
B

T
A
B

D 3rd Verse

G5 A5 G5 D D5 A G5 A5

18

T
A
B

T
A
B

E Interlude

G5

A5

G5

D

A5

E5

21

T
A
B

T
A
B

sl.

Gtr II G5 D5 A5 E5 G5 D5

24

Gtr III Solo gtr.

Full Full 1/2 Full Full

T
A
B

hold H

Gtr IV Extra dubbed

Full Full Full

T
A
B

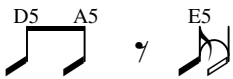
H

T
A
B

Gtr I Acous.

T
A
B

F Guitar Solo
N.C. (F#m)



Musical staff 1 (treble clef) for guitar solo, measures 27-32. Includes a double bar line and key signature change to F#m.

Tablature for guitar solo, measures 27-32. Includes dynamics: *grad.*, *Full*, *Full*, *Full*. Includes a *1/2* time signature change.

Musical staff 2 (treble clef) for guitar solo, measures 27-32. Includes a double bar line and key signature change to F#m.

Tablature for guitar solo, measures 27-32. Includes dynamics: *f*. Includes a *Gtr II* marking.

Musical staff 3 (treble clef) for guitar solo, measures 27-32. Includes a double bar line and key signature change to F#m.

Tablature for guitar solo, measures 27-32. Includes a double bar line and key signature change to F#m.

Musical staff 4 (treble clef) for guitar solo, measures 30-35. Includes a double bar line and key signature change to F#m.

Tablature for guitar solo, measures 30-35. Includes dynamics: *grad.*, *Full*. Includes a *1/2* time signature change.

Musical staff 5 (treble clef) for guitar solo, measures 30-35. Includes a double bar line and key signature change to F#m.

Tablature for guitar solo, measures 30-35. Includes dynamics: *P*, *P*, *P*, *sl.*, *P*, *P*, *P*, *H*, *P*, *P*, *P*, *sl.*, *P*.

33

Full grad. Full Full Full Full 1/2 1/4 1/4 1/4

17 14 17 14 17 2 (17) 17 14 14 14 Full Full Full Full

19(16) 17 17 17 17 17 17 17 17 17 17 17 17 17 17

2 0 2 2 2 0 2

T
A
B

11 9 9 11 4 2 4 2 2 3 11 9 9 11 4 2 4 2 4 6 4 2 4 11 9 9 11 4 2 4 2 2 3 11 9 9 11 4 2 4 2 4 6 4 2 4

P P P H P P P sl. P P P H

36

Full Full Full Full Full Full 1/4 1/4 1/4

17 17 17 17 17 17 17 17 17 6 1 4 14 17 17 16 14 16 14 14 14 16 14 16 14 16 14 14 16 14 16

P P

T
A
B

11 9 9 11 4 2 4 2 4 6 4 2 4 11 9 9 11 4 2 4 2 2 3 11 9 9 11 4 2 4 2 4 6 4 2 4

P P P sl. P P P H P P P sl. P

39

T
A
B

16 15 14 1 1 1 4 4 2 2 1 1 3 3 3 2 5 9

P P sl.

T
A
B

11 9 11 4 4 4 2 4 2 2 3 2 2 2 6 6 4 4 2 2 4 4 4 3 6 9

P H sl.

A/D

G/D

A/D

42

T 14 16 18
A 15 15 15
B

sl.

T 15 17 19
A 16 16 16
B

sl. **ff** Full P.M.----| P.M.----|

Gtr I

T 9 9 9 9 7
A 10 10 10 10 8
B 9 9 9 9 7

sl.

G/D

A/D

A5

A/D

G/D

A/D

A5

G/D

D.S. al Coda
G5 D D5 A

45

T 7 7 9 9 7
A 9 9 9 9 8
B 7 7 7 7 7

sl.

Gtr I

Gtr II

T 5 5 7 5
A 5 5 5 7 5
B 5 5 7 5 5(5)

Full P.M.---| P.M.---| Full P.M.---| P.M.---| Full

48

♩

G5 A5 G5 D D5 A G5 A5

49

50

51

G5 D Dsus2 D Dsus2 D G

52

53

54

55

56

57

58

59

60

61

62

63

64

65

66

67

68

69

70

71

72

73

74

75

76

77

78

79

80

81

82

83

84

85

86

87

88

89

90

91

92

93

94

95

96

97

98

99

100

Keyboard arr. for

54

D G (Play 5 times and fade)

T A B

Elec. gtr.

T A B

Fade back

Keyboard arr. for

56

D G5 G/B Csus2

T A B

H P P H P P P P H P P H H

G6 D G5 G/B Csus2 G6 D

60

T A B

H H P P H H H H P P

C G/B B⁹/₆ *rit.* Cadd9 G

Gtr III Pedal steel arr. for

Full Full

T 8 (8) 8 (8) 15

A

B

Gtr IV Pedal steel arr. for

Full Full Full

T 7 (7) 7 (7) 14 (14)

A

B

Elec. gtr.

Gtr II *mp*

let ring

T 0 1 3 3 3 0 3 3 0 3 3 0 3 3 0

A 0 0 0 0 0 0 0 0 0 0 0 0 0 0 0

B 3 2 1 1 3 3 0 0 0 0 0 0 0 0 0